

## Descriptive reports: line graphs (grammar, vocabulary & tasks)

### Grammar: using adverbs to explain verbs of change

We use **ADVERBS** (following the verb) to describe to what extent (*how much*) the verb of change happened.

1. Complete the sentences below by filling in the correct adverb or adjective - look at the arrows to guide you.

rapidly dramatically sharply 	steadily gradually moderately 	slightly 
--	---	--------------

	Al Ain's population rose _____ to 400,000 people by 2008.
	The number of people living in rural areas of China decreased _____ .
	By 2008, the population of Dubai climbed _____ to 1.4 million people.

2. We use **ADJECTIVES** (before the noun) to describe to what extent (*how much*) the related nouns happened.

a rapid a dramatic a sharp 	a steady a gradual a moderate 	a slight 
--------------------------------------	---	--------------

	There was a _____ rise in Al Ain's population to 400,000 people by 2008.
	There was a _____ decrease in the number of people living in rural areas of China.
	By 2008, there was a _____ climb in the population of Dubai to 1.4 million people.

## Grammar: types of sentences

You have the choice of two basic sentence structures to describe the information in a line graph:






### 1. Sentences using verbs of change

Sales increased slightly, to eight thousand dirhams in September.  
*subject + verb + adverb + other important details*

### 2. Sentences using nouns of change (noun verbs)

There was a slight increase in sales, to 8,000 dirhams in September.  
*be + art. + adj. + noun + subject + other important details*  
verb

Practice changing these verbs of change and adverbs into adjectives and related nouns.

	Verbs of change/ adverbs	Adjectives/ Related nouns
	<ul style="list-style-type: none"> <li>▪ rose dramatically to</li> <li>▪ increased steadily to</li> <li>▪ climbed gradually to</li> </ul>	<ul style="list-style-type: none"> <li>▪ _____</li> <li>▪ _____</li> <li>▪ _____</li> </ul>
	<ul style="list-style-type: none"> <li>▪ _____</li> <li>▪ _____</li> <li>▪ _____</li> <li>▪ _____</li> <li>▪ _____</li> </ul>	<ul style="list-style-type: none"> <li>▪ there was a sharp fall to</li> <li>▪ there was a dramatic decline</li> <li>▪ there was a slight decrease</li> <li>▪ there was a sudden drop</li> <li>▪ there was a steady reduction</li> </ul>
	<ul style="list-style-type: none"> <li>▪ fluctuated (upwards)</li> <li>▪ fluctuated (downwards)</li> </ul>	<ul style="list-style-type: none"> <li>▪ _____</li> <li>▪ _____</li> </ul>
	<ul style="list-style-type: none"> <li>▪ _____</li> <li>▪ _____</li> </ul>	<ul style="list-style-type: none"> <li>▪ there was a leveling out at</li> <li>▪ there was no change</li> </ul>
	<ul style="list-style-type: none"> <li>▪ _____</li> </ul>	<ul style="list-style-type: none"> <li>▪ there was a peak</li> </ul>

### Vocabulary: to describe trends in line graphs

Trends are changes or movements over time. These changes are normally expressed in **numeric** items, for example, **percentage**, **weight**, or **number**. There are three basic trends:



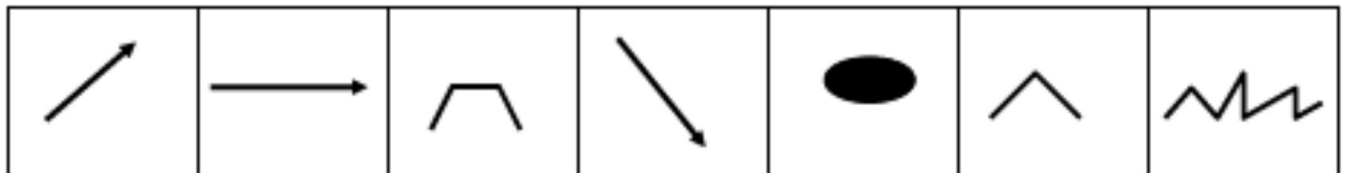
For each trend there are a number of verbs and nouns to express the movement. We can use a **verb of change**, for example:

Population levels **fell**.

or we can use a **related noun**, for example:

There was a **fall** in population.

*Match the graphic with the vocabulary below. Draw it into the box next to the vocab:*

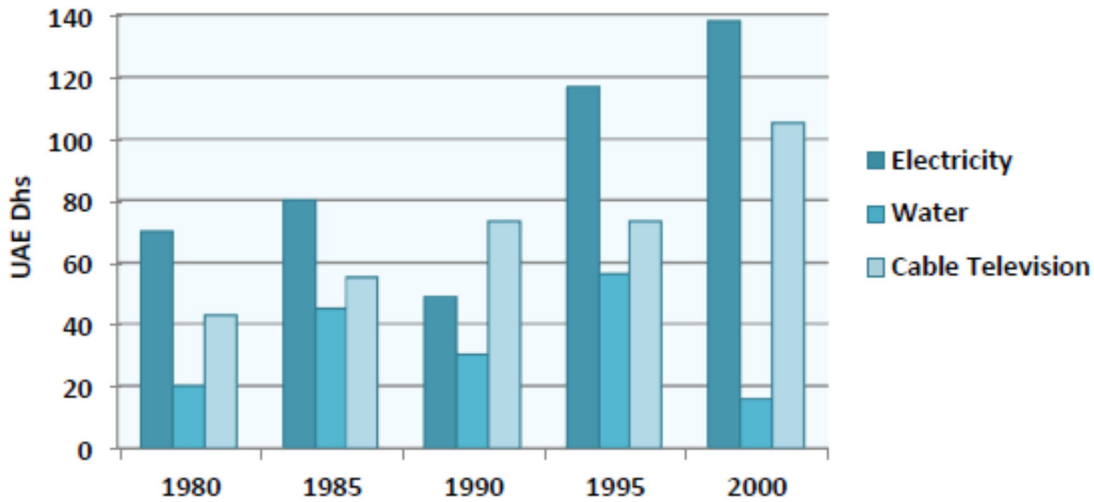


Direction	Verbs of Change		Related Nouns
	Past Tense	Future Tense (IELTS)	
	<ul style="list-style-type: none"> <li>• rose to</li> <li>• increased to</li> <li>• went up to</li> <li>• climbed to</li> </ul>	<ul style="list-style-type: none"> <li>• will rise to</li> <li>• will increase to</li> <li>• will go up to</li> <li>• will climb to</li> </ul>	<ul style="list-style-type: none"> <li>• a rise</li> <li>• an increase</li> <li>• an upward trend</li> <li>• a climb</li> </ul>
	<ul style="list-style-type: none"> <li>• fell to</li> <li>• declined to</li> <li>• decreased to</li> <li>• dropped</li> <li>• went down to</li> </ul>	<ul style="list-style-type: none"> <li>• will fall to</li> <li>• will decline to</li> <li>• will decrease to</li> <li>• will drop to</li> <li>• will go down to</li> </ul>	<ul style="list-style-type: none"> <li>• a fall</li> <li>• a decline</li> <li>• a decrease</li> <li>• a drop</li> <li>• a reduction</li> </ul>
	<ul style="list-style-type: none"> <li>• leveled out at</li> <li>• did not change</li> <li>• remained steady at</li> <li>• stayed constant at</li> </ul>	<ul style="list-style-type: none"> <li>• will level out at</li> <li>• will not change</li> <li>• will remain steady at</li> <li>• will stay constant at</li> </ul>	<ul style="list-style-type: none"> <li>• a leveling out</li> <li>• no change</li> </ul>
	<ul style="list-style-type: none"> <li>• peaked at</li> </ul>	<ul style="list-style-type: none"> <li>• will peak at</li> </ul>	<ul style="list-style-type: none"> <li>• a peak</li> </ul>
	<ul style="list-style-type: none"> <li>• plateaued at</li> </ul>	<ul style="list-style-type: none"> <li>• will plateau at</li> </ul>	<ul style="list-style-type: none"> <li>• a plateau</li> </ul>
	<ul style="list-style-type: none"> <li>• stood at</li> <li>• (began at...)</li> </ul>	<ul style="list-style-type: none"> <li>• will stand at</li> </ul>	
		<ul style="list-style-type: none"> <li>• will fluctuate</li> </ul>	<ul style="list-style-type: none"> <li>• a fluctuation</li> </ul>

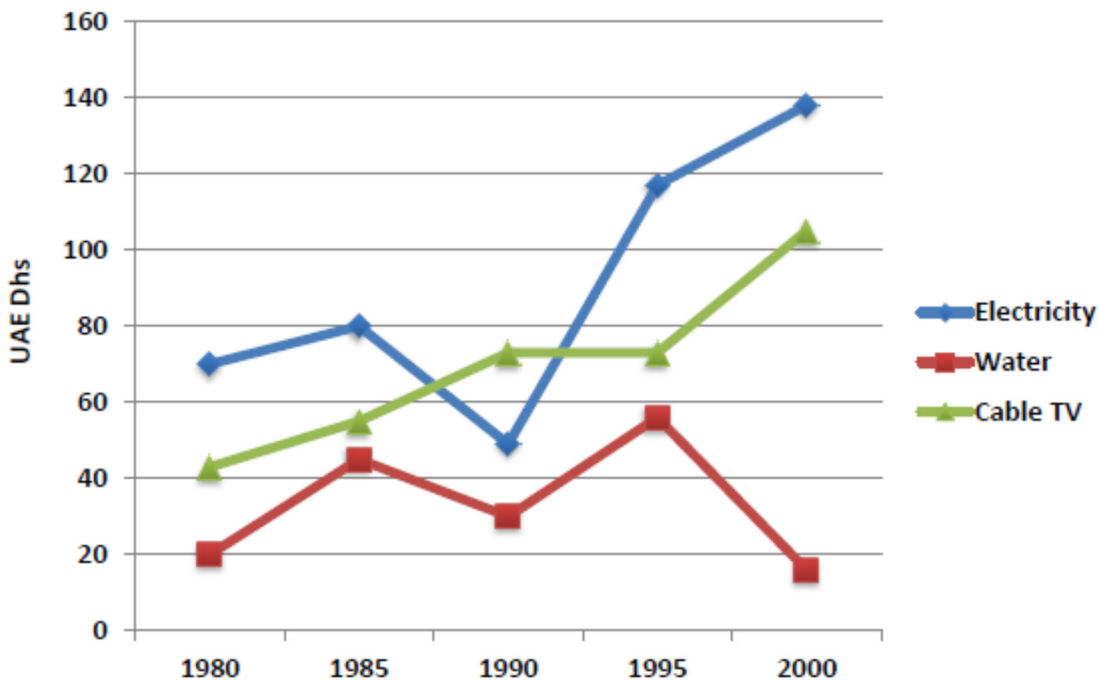
### TASK 1: Gap fill

The line graph and bar chart below both show the same data; for costs of three utilities over a 20 year period. Look at them carefully and then look at the report on the next page.

#### Average Monthly Cost of Utilities in Al Ain



#### Average Monthly Cost of Utilities in Al Ain



--	--	--

Look at the graphs on the previous page. Use information from the page to complete the gaps in this report.

The line graph shows the average cost per month of \_\_\_\_\_, \_\_\_\_\_ and cable television in Al Ain from 1980 to 2000 in UAE Dhs. As an overall trend, the cost of both \_\_\_\_\_ and \_\_\_\_\_ rose, while the cost of \_\_\_\_\_ fell over the 20 year period.

---

Looking at the average monthly cost of \_\_\_\_\_, it is clear to see that it increased over the 20 years. In \_\_\_\_\_, it stood at about 70 Dhs. Then, from 1980 to \_\_\_\_\_ it increased slightly to 80 Dhs. From 1985 to \_\_\_\_\_ the cost of electricity fell moderately to approximately \_\_\_\_\_ Dhs, which was the lowest figure in the 20 years. After that, it rose dramatically to just under \_\_\_\_\_ Dhs in 2000.

---

Similarly, the cost of \_\_\_\_\_ went up during the same 20 years. It stood at just over \_\_\_\_\_ Dhs in 1980. Following this, it increased steadily to approximately \_\_\_\_\_ Dhs in 1990. Between 1990 and \_\_\_\_\_ the average monthly cost of cable television remained constant. Finally, there was a moderate rise in costs to slightly over \_\_\_\_\_ Dhs in 2000, which was the highest in the 20 years.

---

Unlike the cost of \_\_\_\_\_ and \_\_\_\_\_, there was an overall decrease in the cost of \_\_\_\_\_. It started at 20 Dhs in \_\_\_\_\_, after which it rose steadily to just over \_\_\_\_\_ Dhs in 1985. From \_\_\_\_\_ to 1995 the monthly cost of water fluctuated up to a peak of slightly under \_\_\_\_\_ Dhs. Finally, in \_\_\_\_\_, there was a moderate decrease in the cost of water to just under 20 Dhs, which was the lowest figure in the 20 years.

### TASK 2: Understanding descriptions (part one)

Listen and draw the line for each graph:

**Graph A – Number of cars**



**Graph B – Number of cars**



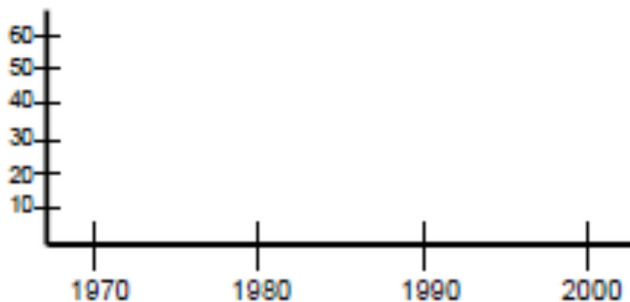
**Graph C – Number of cars**



**Graph D – Number of cars**



**Graph E – Number of cars**



**Graph F – Number of cars**



**Graph G – Number of cars**



**Graph H – Number of cars**



--	--	--

## TASK 2: Understanding descriptions (part two)

Listen to the audio files again and now fill in the missing words:

### Graph A

In 1970, the number of cars \_\_\_\_\_ 5. After that, the number \_\_\_\_\_  
\_\_\_\_\_ 50 in 1990. Finally, it \_\_\_\_\_ 40 in 2000.

### Graph B

In 1970, the number of cars \_\_\_\_\_ 20. Then, from 1970 to 1980, it \_\_\_\_\_  
\_\_\_\_\_ 40. In 1990, the number of cars \_\_\_\_\_ 30. After that, in 2000, the number  
\_\_\_\_\_ back to 40.

### Graph C

In 1970, the number of cars \_\_\_\_\_ 60. From 1970 to 2000, there was a \_\_\_\_\_  
\_\_\_\_\_ 10.

### Graph D

The number of cars \_\_\_\_\_ 20 in 1970. Then, there was an \_\_\_\_\_  
\_\_\_\_\_ 50 in 1990. From 1990 to 2000, the number of cars \_\_\_\_\_ 50 to 40.

### Graph E

The number of cars \_\_\_\_\_ 10 in 1970. From 1970 to 1980, it \_\_\_\_\_ and  
\_\_\_\_\_ 60 in 1990. In 2000, the number of cars \_\_\_\_\_ 30.

### Graph F

In 1970, the number of cars \_\_\_\_\_ 40. The number \_\_\_\_\_ 60  
between 1980 and 1990. Finally, the number in 2000 \_\_\_\_\_ 20.

### Graph G

The number of cars \_\_\_\_\_ 60 in 1970. Then, there was a \_\_\_\_\_ in the number of  
cars to 40 in 1980. This figure \_\_\_\_\_ 40 for the next 20 years.

### Graph H

The number of cars \_\_\_\_\_ 10 in 1970. Then, from 1980, it \_\_\_\_\_ for  
the next 10 years at 30. It then \_\_\_\_\_ 60 in 2000.

